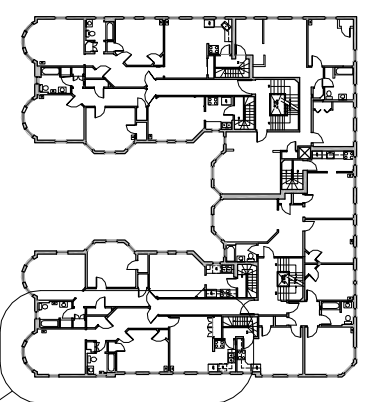


I CERTIFY TO THE BEST OF MY KNOWLEDGE, INFORMATION AND BELIEF THAT THIS PLAN FULLY AND ACCURATELY DEPICTS UNIT 57-32, THE LAYOUT OF THE UNIT, ITS LOCATION, DIMENSIONS, APPROXIMATE AREA, MAIN ENTRANCE AND IMMEDIATE COMMON AREA TO WHICH IT HAS ACCESS, AS BUILT



KEY PLAN
SCALE: 1" = 50'-0"
AREA OF ENLARGED PLAN

THIRD FLOOR PLAN (UNIT 57-32)
SCALE: 3/32" = 1'-0"

CRAMER & LEVINE ARCHITECTS
134 EAST MAIN STREET
TEL (508) 230-2466
NORTON, MA 02766
FAX (774) 265-1811

PROJECT:
57-59 MAGAZINE STREET CONDOMINIUM
57-59 MAGAZINE STREET
CAMBRIDGE, MA 02139

DRAWN BY:	NUMBER:
tm	3-32
JOB #	
04-072	
DATE:	
1/3/06	
CAD FILE:	